

Senso™

Committed to Quality

All Types Of Industrial Valves



PRODUCT — — BROCHURE

1PC / 2PC / 3PC FLANGED END BALL VALVE

BUTTERFLY VALVE ■ 1PC / 3PC SCREW END BALL VALVE

Y TYPE STRAINER ■ FLANGE END / SCREW END SIGHT GLASS

CHECK VALVE ■ FLUSH BOTTOM BALL VALVE ■ DISC CHECK VALVE

SCREWED END CHECK VALVE ■ FLANGE END GATE / GLOBE VALVE

DOUBLE WINDOW SIGHT GLASS FLANGE END ■ WAFER CHECK NRV



+91 93757 68870, +91 70168 41060



info@sensovalves.com



www.sensovalves.com



Unit 1 : Rani Industries Estate, Division-1, Plot No-52, B/h Parin Furniture, Gondal Road, Vavdi, Rajkot, Rajkot, Gujarat, 360004

Unit 2 : Plot No-3, Shed No-1, Ribda Railway Station, Global Industrial Estate, Opp Accurate Casting, Ribda, Rajkot, Gujarat, 360311

COMPANY PROFILE

Define Industries based in Rajkot, is a leading manufacturer and supplier of high-quality industrial valves and flow control solutions. Since our inception, we have been committed to providing innovative, reliable, and durable products to industries worldwide. We specialize in manufacturing **Senso Brand Valves**, ensuring optimal performance. All our products are 100% Engineered & Manufactured in-house at our advanced facility in Rajkot, and our strict quality control processes ensure that they meet top industry standards.

With vast experience in the field of valve manufacturing, Yesh Industries maintains strict quality control norms at various stages of production. Our full-fledged testing facility, equipped with the latest technology, ensures consistent quality.

Yesh Industries has earned a reputation for technical excellence in the valve industry in a very short span and is accredited with **ISO 9001:2000 Certification**.

Define Industries is certified by its valued customers as has adopted an advanced technology to produce a compatible product range that warrants safe and reliable operation in compliance with virtually all and any requirements.



Define Industries is using CNC MACHINES and SPECIAL PURPOSE MACHINES For Manufacturing Ball valves and Butterfly valves

We not only control quality but assure also by observing the strictest quality standards. The Company also observes trouble free performance at every level to prove its class product.

With over two decades of experience in the valve industry, we are committed to offering innovative solutions that help industries operate smoothly and efficiently. Our state-of-the-art products are built with the highest standards of precision and durability, ensuring minimal maintenance and maximum performance.

At Define Industries, we take pride in being a trusted partner to industries worldwide. We're not just a valve supplier - we're a solutions provider dedicated to your success. Our products are designed to optimize your operations, reduce downtime, and increase efficiency.

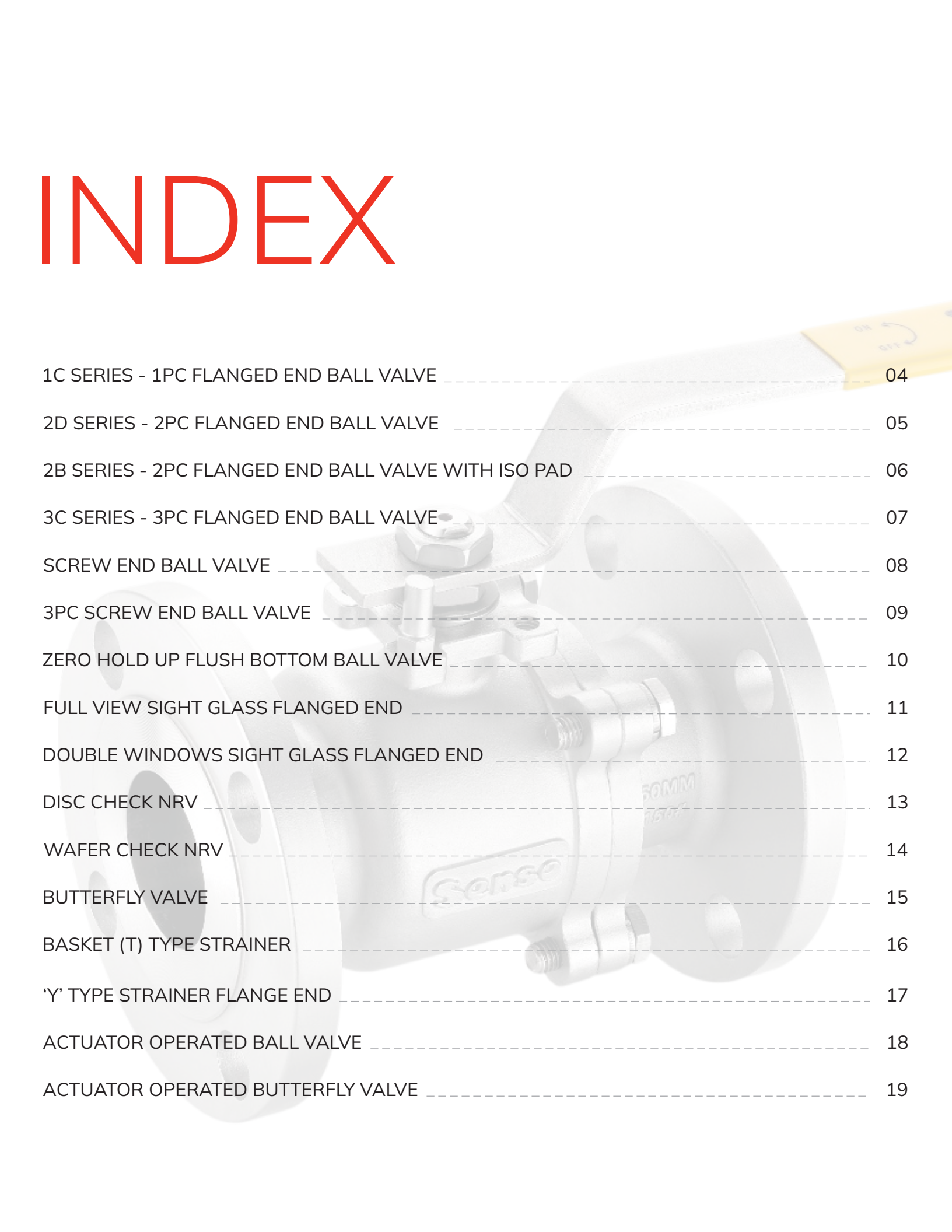
OUR VISION

To be the leading provider of high-quality industrial valves, delivering innovative and sustainable solutions that help our clients operate efficiently and thrive in their industries.

OUR MISSION

To provide high-quality valves that exceed industry standards, backed by excellent customer service and ongoing support. We are committed to continuous innovation and improvement to help our clients succeed.

INDEX



1C SERIES - 1PC FLANGED END BALL VALVE	04
2D SERIES - 2PC FLANGED END BALL VALVE	05
2B SERIES - 2PC FLANGED END BALL VALVE WITH ISO PAD	06
3C SERIES - 3PC FLANGED END BALL VALVE	07
SCREW END BALL VALVE	08
3PC SCREW END BALL VALVE	09
ZERO HOLD UP FLUSH BOTTOM BALL VALVE	10
FULL VIEW SIGHT GLASS FLANGED END	11
DOUBLE WINDOWS SIGHT GLASS FLANGED END	12
DISC CHECK NRV	13
WAFER CHECK NRV	14
BUTTERFLY VALVE	15
BASKET (T) TYPE STRAINER	16
'Y' TYPE STRAINER FLANGE END	17
ACTUATOR OPERATED BALL VALVE	18
ACTUATOR OPERATED BUTTERFLY VALVE	19

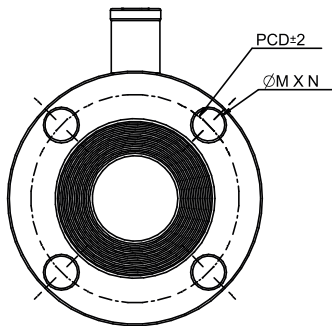


Technical Specification

Size	DN15 to DN50
End Connection	Flange End As Per ASA 150#
Face to Face	As per ANSI B 16.10
Design Standard	As Per ISO 17292
MFG Std.	BS 5351
Testing Standard	API 598
Operation	Hand Lever Operated

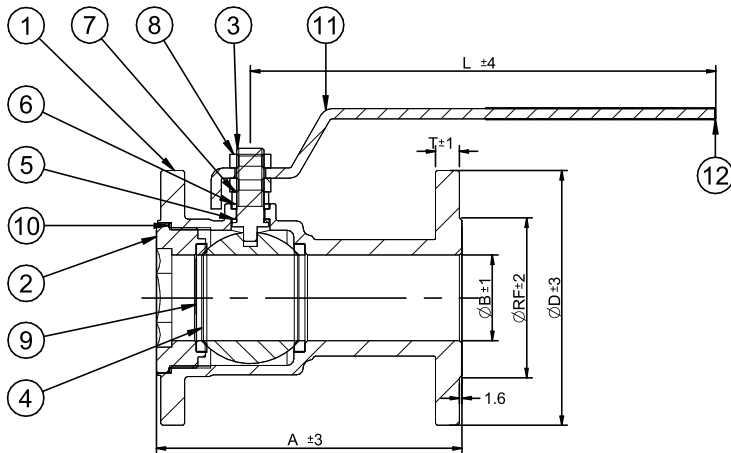
Features

- ✓ Floating Ball Design
- ✓ Full Port Ball Valve
- ✓ Blow Out Proof Stem
- ✓ Mirror Finished Ball
- ✓ Solid Ball



Dimensions (150#)

Size	A	ØB	ØRF	ØD	PCD	L	ØM	N	T
15	108	13	35	89	60.5	155	16	4	11
25	127	25	50	108	79.5	155	16	4	11
40	165	38	73	127	98.5	230	16	4	14
50	178	50	92	151	121	285	19	4	16



Material Specification

No.	Description	Material	Qty
1	Body	ASTM A 351 GR. CF8 / ASTM A 351 GR. CF8M	1
2	Cover	ASTM A 351 GR. CF8 / ASTM A 351 GR. CF8M	1
3	Stem	AISI SS 304 / AISI SS 316	1
4	Ball	AISI SS 304 / AISI SS 316	1
5	Stem Seal	PTFE	1
6	Stem Ring	PTFE	1
7	Gland Bush	SS 304 / SS 316	1
8	Gland Nut & Lock Nut	SS 304	2
9	Seat Ring	PTFE	2
10	Body Sealant Ring	PTFE	1
11	Lever	SS 202 / SS 304	1
12	Lever Sleeve	RUBBER	1

Hydro Test (150#)

Test Type	Kg / Cm2	PSIG
Hydro Body	32	430
Hydro Seat	22	315
Air / Pneumatic	7	80

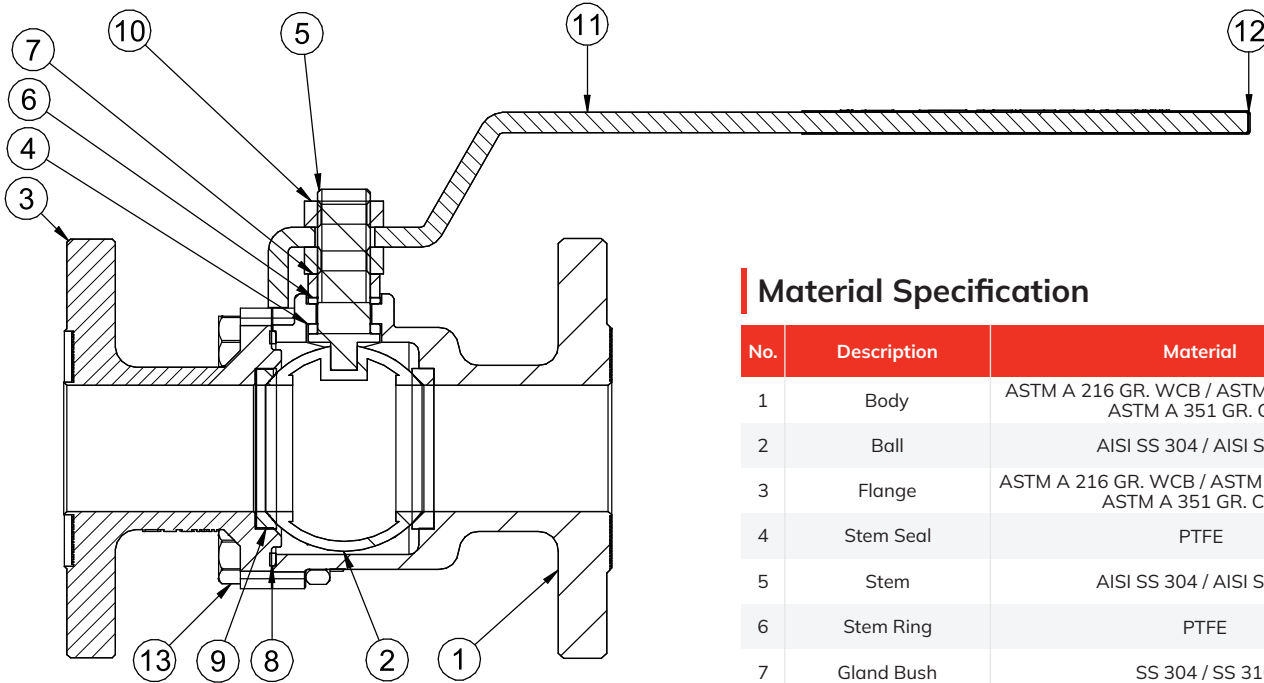


Technical Specification

Size	DN15 to DN150
End Connection	Flange End As Per ASA 150#
Face to Face	As per ANSI B 16.10
Testing Standard	API 598
Operation	Lever
Design Standard	As Per ISO 17292
MFG. Standard	BS 5351

Features

- Floating Ball Design
- Blow Out Proof Stem
- Full Port Ball Valve
- Solid Ball Available On Request



Material Specification

No.	Description	Material	Qty
1	Body	ASTM A 216 GR. WCB / ASTM A 351 GR. CF8 / ASTM A 351 GR. CF8M	1
2	Ball	AISI SS 304 / AISI SS 316	1
3	Flange	ASTM A 216 GR. WCB / ASTM A 351 GR. CF8 / ASTM A 351 GR. CF8M	1
4	Stem Seal	PTFE	1
5	Stem	AISI SS 304 / AISI SS 316	1
6	Stem Ring	PTFE	1
7	Gland Bush	SS 304 / SS 316	1
8	Body Sealant Ring	PTFE	1
9	Seat Ring	PTFE	2
10	Gland Nut & Lock Nut	SS 304	2
11	Lever	MS / SS 202	1
12	Lever Sleeve	Rubber	1
13	Bolt & Nut	B7 / SS 304	4

Hydro Test (150#)

Test Type	Kg / Cm2	PSIG
Hydro Body	32	430
Hydro Seat	22	315
Air / Pneumatic	7	80



Technical Specification

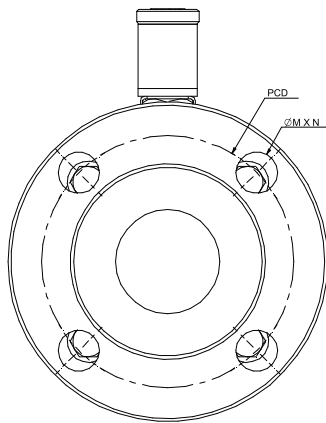
Size	DN15 to DN150
End Connection	Flange End As Per ASA 150#
Face to Face	As per ANSI B 16.10
Design Standard	As Per ISO 17292
MFG Std.	BS 5351
Testing Standard	API 598
Operation	Lever, Gear & Pneumatically Operated

Features

- Floating Ball Design
- Blow Out Proof Stem
- Full Port Ball Valve
- Integral ISO Mounting Pad
- Extended Shaft Ball Valve On Request
- Solid Ball Available On Request

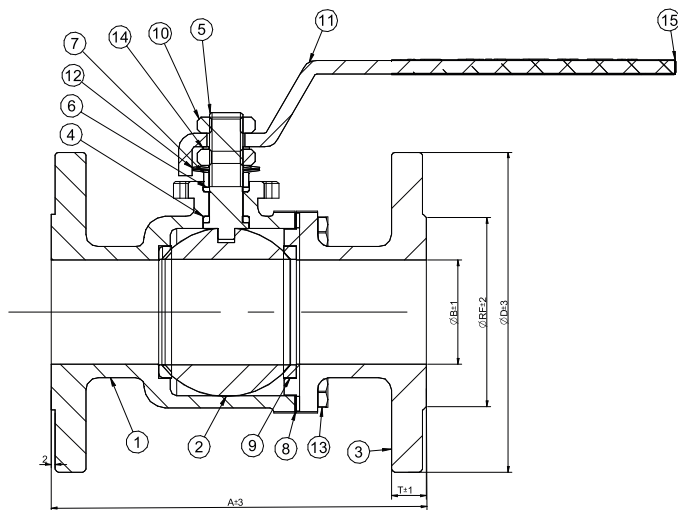
Dimensions (150#)

Size	A	ØB	ØRF	ØD	PCD	L	ØM	N	T
15	108	13	35	90	60.5	130	16	4	11
20	117	19	43	98.5	70	130	16	4	11
25	127	25	50	110	79.50	175	16	4	11.6
40	165	38	73	125	98.50	220	16	4	14.7
50	178	49	92	150	119.30	245	19	4	16.3
65	190	64	104	178	140	350	19	4	17.5
80	203	75	127	190	152.50	450	19	4	19.5
100	229	98	157	230	190.50	500	19	8	24
125	254	125	186	252	216	600	22.5	8	24
150	267	148	216	279	241	600	22.5	8	26



Material Specification

No.	Description	Material	Qty
1	Body	ASTM A 216 GR. WCB / ASTM A 351 GR. CF8 / ASTM A 351 GR. CF8M	1
2	Ball	AISI SS 304 / AISI SS 316	1
3	Flange	ASTM A 216 GR. WCB / ASTM A 351 GR. CF8 / ASTM A 351 GR. CF8M	1
4	Stem Seal	PTFE	1
5	Stem	AISI SS 304 / AISI SS 316	1
6	Stem Ring	PTFE	1
7	Gland Bush	SS 304 / SS 316	1
8	Body Sealant Ring	PTFE	1
9	Seat Ring	PTFE	2
10	Gland Nut & Lock Nut	SS 304	2
11	Lever	MS / SS 202 / SS 304	1
12	Wave Washer	SS 304	2
13	Bolt	B7 / SS 304	4
14	Locking Washer	SS 304	1
15	Lever Sleeve	Rubber	1



Hydro Test (150#)

Test Type	Kg / Cm2	PSIG
Hydro Body	32	430
Hydro Seat	22	315
Air / Pneumatic	7	80



Technical Specification

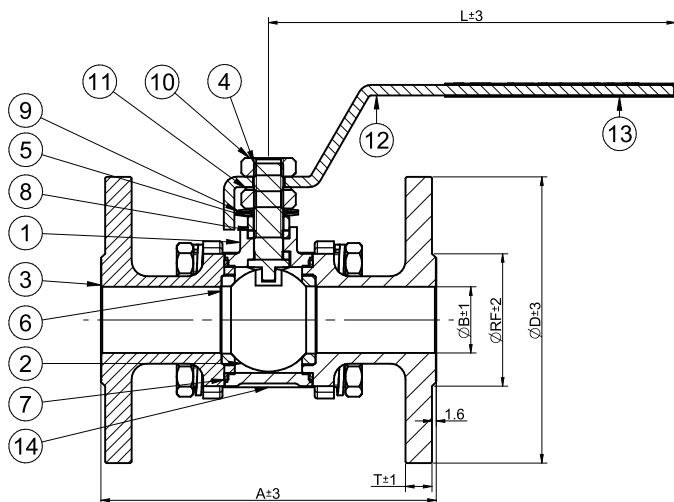
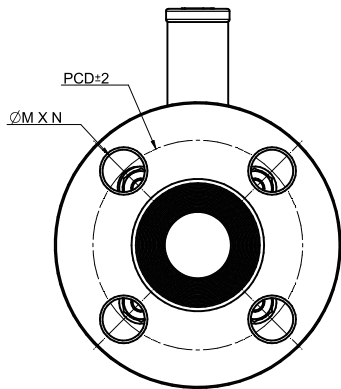
Size	DN15 to DN150
End Connection	Flange End As Per ASA 150#
Face to Face	As per ANSI B 16.10
Design Standard	As per ISO 17292
MFG Std.	BS 5351
Testing Standard	API 598
Operation	Hand Lever Operated

Features

- Floating Ball Design
- Blow Out Proof Stem
- Mirror Finished Ball
- Full Port Ball Valve
- Solid Ball Available On Request

Dimensions (150#)

Size	A	ØB	ØRF	ØD	PCD	L	ØM	N	T
15	108	13	35	90	60.5	130	16	4	11
20	117	19	43	98.5	70	130	16	4	11
25	127	25	50	110	79.5	175	16	4	11.6
32	140	32	62	116	89	195	16	4	12
40	165	38	73	125	98.5	220	16	4	14.7
50	178	49	92	150	119.30	245	19	4	16.3
65	190	64	104	178	140	350	19	4	17.5
80	203	75	127	190	152.5	450	19	4	19.5
100	229	98	157	230	190.5	500	19	8	24
125	254	125	186	252	216	600	22.5	8	24
150	267	148	216	279	241	600	22.5	8	26



Material Specification

No.	Description	Material	Qty
1	Body	ASTM A 216 GR. WCB / ASTM A 351 GR. CF8 / ASTM A 351 GR. CF8M	1
2	Ball	AISI SS 304 / AISI SS 316	1
3	Flange	ASTM A 216 GR. WCB / ASTM A 351 GR. CF8 / ASTM A 351 GR. CF8M	2
4	Stem	AISI SS 304 / AISI SS 316	1
5	Gland Bush	SS 304 / SS 316	1
6	Seat Ring	PTFE	2
7	Body Sealant Ring	PTFE	2
8	Stem Ring	PTFE	2
9	Wave Washer	SS 304	2
10	Gland Nut & Lock Nut	SS 304	2
11	Locking Washer	SS 304	1
12	Lever	MS / SS 202 / SS 304	1
13	Lever Sleeve	Rubber	1
14	Stud & Nuts	B7 STUD & 2H NUT / SS 304	4+8

Hydro Test (150#)

Test Type	Kg / Cm2	PSIG
Hydro Body	32	430
Hydro Seat	22	315
Air / Pneumatic	7	80



Technical Specification

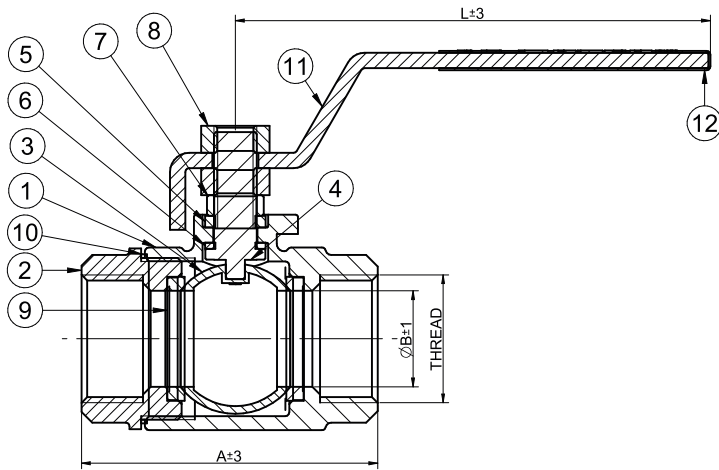
Size	DN08 to DN100
End Connection	Screwed End to BSP & NPT
Face to Face	Manufacturer Defined
Testing Standard	API 598
Operation	Hand Lever Operated

Features

- ✓ Floating Ball Design
- ✓ Full Port Ball Valve
- ✓ Blow Out Proof Stem
- ✓ Mirror Finished Ball

Dimensions

Size	A	ØB	L	THREAD
08	53	10	105	1/4"
10	53	10	105	3/8"
15	61.5	12.5	105	1/2"
20	67	19	105	3/4"
25	77	25	125	1"
32	91.5	32	155	1 1/4"
40	98.5	38	167	1 1/2"
50	115	50	195	2"
65	141.5	63	239	2 1/2"
80	158	75	239	3"
100	180	98	325	4"



Material Specification

No.	Description	Material	Qty
1	Body	ASTM A 351 GR. CF8 / ASTM A 351 GR. CF8M	1
2	Body Connector	ASTM A 351 GR. CF8 / ASTM A 351 GR. CF8M	1
3	Ball	AISI SS 304 / AISI SS 316	1
4	Stem	AISI SS 304 / AISI SS 316	1
5	Stem Ring	PTFE	1
6	Stem Seal	PTFE	1
7	Gland Bush	SS 304 / SS 316	1
8	Gland Nut & Lock Nut	SS 304	2
9	Seat Ring	PTFE	2
10	Body Sealant Ring	PTFE	1
11	Lever	SS 202 / SS 304	1
12	Lever Sleeve	Rubber	1

Hydro Test (150#)

Test Type	Kg / Cm2	PSIG
Hydro Body	32	430
Hydro Seat	22	315
Air / Pneumatic	7	80



Technical Specification

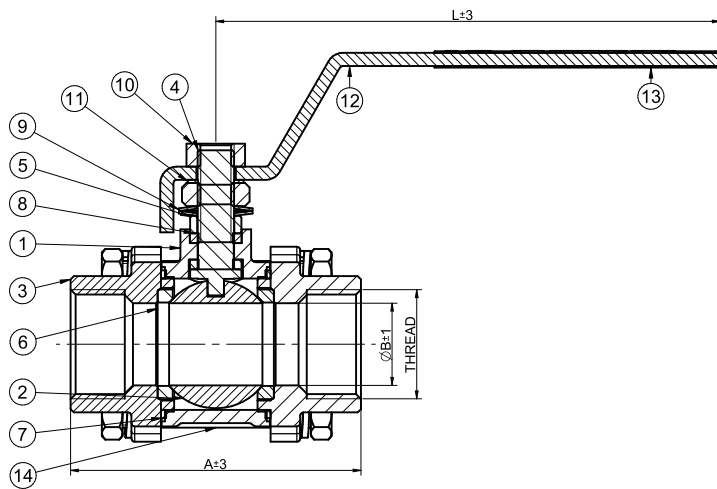
Size	DN15 to DN50
End Connection	Screwed End to BSP & NPT
Face to Face	Manufacturer Defined
Testing Standard	API 598
Operation	Hand Lever Operated

Features

- ✓ Floating Ball Design
- ✓ Full Port Ball Valve
- ✓ Blow Out Proof Stem

Dimensions

Size	A	ØB	L	THREAD
15	68	12.5	125	1/2"
20	78	18	130	3/4"
25	89	25	152	1"
40	109	38	225	1 1/2"
50	119	49	225	2"

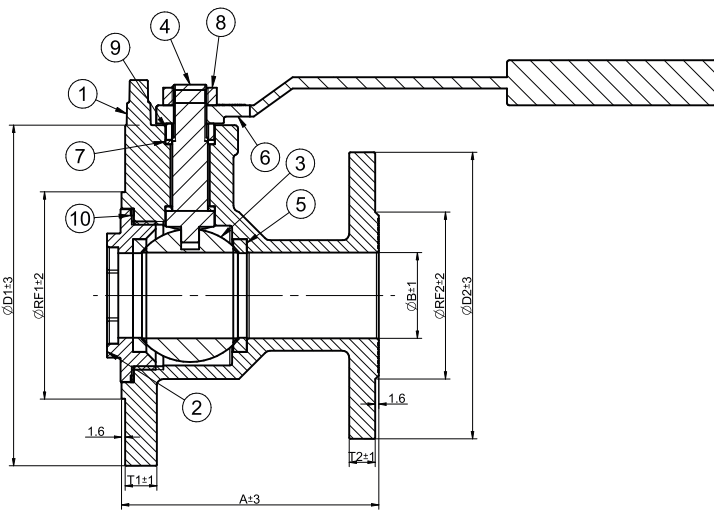


Material Specification

No.	Description	Material	Qty
1	Body	ASTM A 216 GR. WCB / ASTM A 351 GR. CF8 / ASTM A 351 GR. CF8M	1
2	Ball	AISI SS 304 / AISI SS 316	1
3	Pipe End	ASTM A 216 GR. WCB / ASTM A 351 GR. CF8 / ASTM A 351 GR. CF8M	2
4	Stem	AISI SS 304 / AISI SS 316	1
5	Gland Bush	SS 304 / SS 316	1
6	Seat Ring	PTFE	2
7	Body Sealant Ring	PTFE	2
8	Stem Ring	PTFE	2
9	Wave Washer	SS 304	2
10	Gland Nut & Lock Nut	SS 304	2
11	Locking Washer	SS 304	1
12	Lever	MS / SS 202 / SS 304	1
13	Lever Sleeve	Rubber	1
14	Stud & Nuts	B7 STUD & 2H NUT / SS 304	4+8

Hydro Test (150#)

Test Type	Kg / Cm2	PSIG
Hydro Body	32	430
Hydro Seat	22	315
Air / Pneumatic	7	80



Technical Specification

Size	DN40 to DN150
End Connection	Flanged as Per ASA 150#
Face to Face	Manufacturer Defined
Design Standard	BS 5351
Testing Standard	API 598
Operation	Hand Lever Operating at 45 Deg.

Features

- Floating Ball Design
- Blow Out Proof Stem
- Full Port Ball Valve
- Single Piece Investment Casting Body Zero Hold Up Area With Solid Ball

Material Specification

No.	Description	Material	Qty
1	Body	ASTM A 351 GR. CF8M	1
2	Connector	ASTM A 351 GR. CF8M	1
3	Ball	AISI SS 316	1
4	Stem	AISI SS 316	1
5	Seat Ring	PTFE	2
6	Lever	SS 316 Investment Casting	1
7	Stem Seal	PTFE	2
8	Lock Nut	SS 316	1
9	Gland Bush	SS 316	1
10	Body Sealant Ring	PTFE	1

Dimensions (150#)

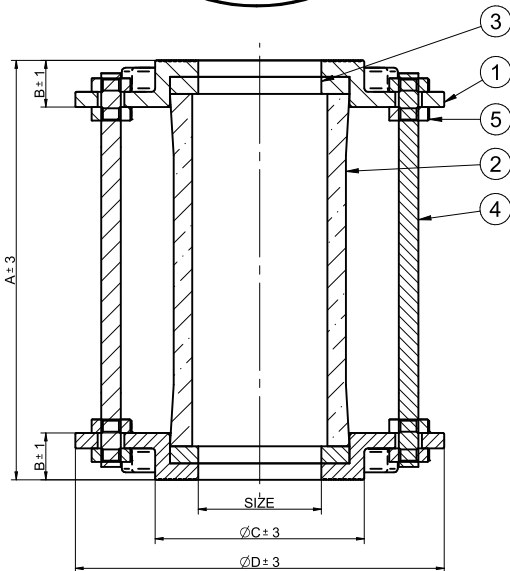
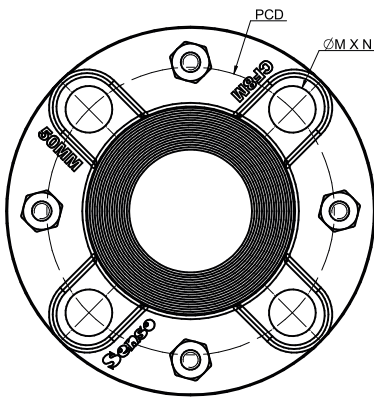
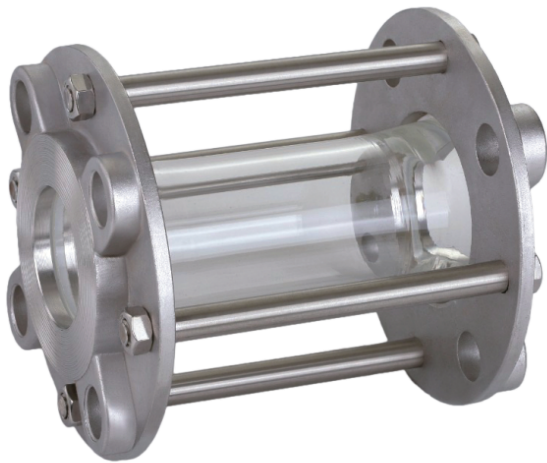
Size	A	ØB	ØRF1	ØD1	PCD1	ØM1	N1	T1	ØRF2	ØD2	PCD2	ØM2	N2	T2
40 X 25	101	32	74	127	98	16	4	11.5	51	108	78	16	4	10
40 X 40	101	32	74	127	98	16	4	11.5	74	127	98	16	4	11.5
50 X 40	114	38	92	151	120	19	4	14	74	127	98	16	4	11.5
50 X 50	114	38	92	151	120	19	4	14	92	151	120	19	4	14
80 X 50	140	64	127.5	190	152	19	4	16.5	92	151	120	19	4	14
80 X 80	140	64	127.5	190	152	19	4	16.5	127.5	190	152	19	4	16.5
100 X 80	165	74	159	230	190.5	19	8	22.5	127.5	190	152	19	4	16.5
100 X 100	165	74	159	230	190.5	19	8	22.5	159	230	190.5	19	8	22.5

Hydro Test (150#)

Test Type	Kg / Cm2	PSIG
Hydro Body	32	430
Hydro Seat	22	315
Air / Pneumatic	7	80

Note :

- 150X150 Available on Request



Technical Specification

Size	DN15 to DN150
End Connection	Flange End
Face to Face	As Per ANSI B16.10
Design Standard	Manufacturer Defined
Testing Standard	Manufacturing Defined
Glass Length	4" & 6"

Features

- ✓ Acrylic Protection Cover Available On Bulk Qty.

SS Sight Glass Dimensions (150#)

SIZE NB	A (6")	A (4")	B	ØC	ØD	ØM	N	PCD
15	170	121	16	35	89	16	4	60
20	170	121	17	42	98	16	4	69
25	170	121	18	50	107	16	4	79
40	170	121	18	68	126.5	16	4	96.5
50	170	121	19	85	150	19	4	116.5
65	170	121	19	104	176	19	4	139
80	170	121	19	110	187	19	4	147.5
100	170	121	19	146	220	19	4	181.5
150	180	121	24	212	277	22.5	8	238

MS Sight Glass Dimensions (150#)

SIZE NB	A (6")	A (4")	B	ØC	ØD	ØM	N	PCD
15	170	121	12	35	89	16	4	60
20	170	121	12	42	98	16	4	69
25	170	121	12.5	50	110	16	4	79
40	170	121	15	68	127	16	4	96.5
50	170	121	17	85	153	19	4	116.5
65	170	121	19	104	178	19	4	139
80	170	121	20	110	187	19	4	147.5
100	170	121	24	146	220	19	4	181.5
150	180	121	24	215	280	23	8	238

Material Specification

No.	Description	Material	Qty
1	Flange	ASTM A 351 GR. CF8 / ASTM A 351 GR. CF8M / MS	1
2	Glass Tube	Toughened	1
3	Gasket	PTFE	2
4	Stud	SS202 / SS304 / SS316	1
5	Nut	SS202 / SS304 / SS316	1

Hydro Test (150#)

Test Type	Kg / Cm2
Hydro Body Seat	6
Working Pressure	3



Technical Specification

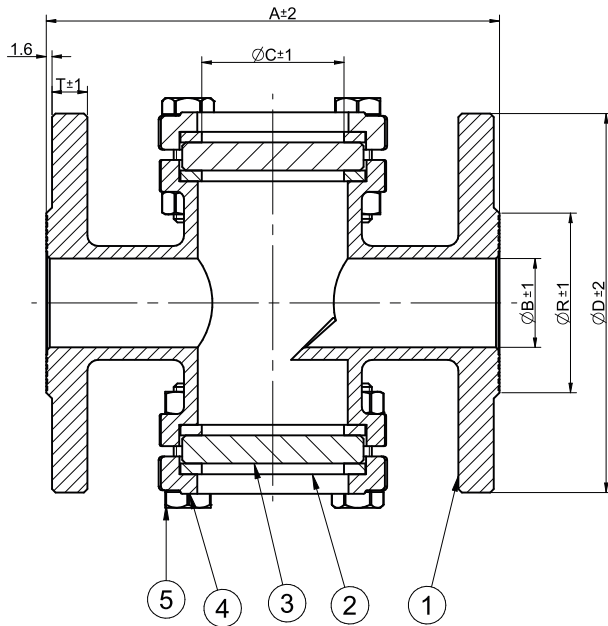
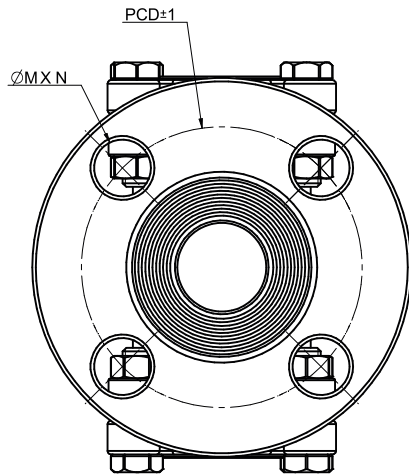
Size	DN25 to DN100
End Connection	Flange End
Face to Face	As Per ANSI B16.10
Design Standard	As Per ISO 17292
Testing Standard	Manufacturer Defined

Features

- Single Piece Design Investment Casting Body & Side Plate

Dimensions (150#)

Size	A	ØB	ØC	ØD	PCD	ØR	ØM	N	T
25	127	25	43	106	79.5	51	16	4	10
40	165	38	50	125	97	73	16	4	12
50	178	50	50	150.5	120.5	90	19	4	14
80	203	75	85	188	151.5	125	19	4	17
100	230	100	85	226	190.5	157	19	8	21

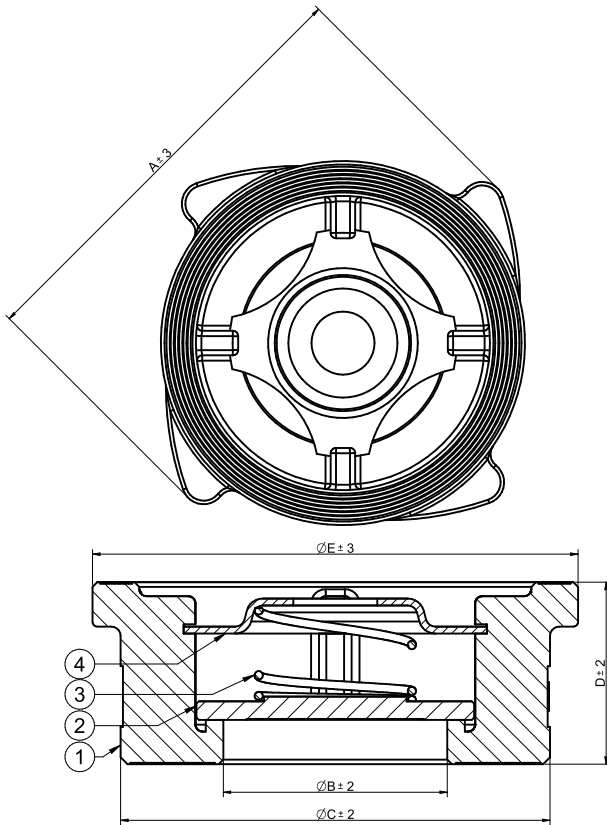
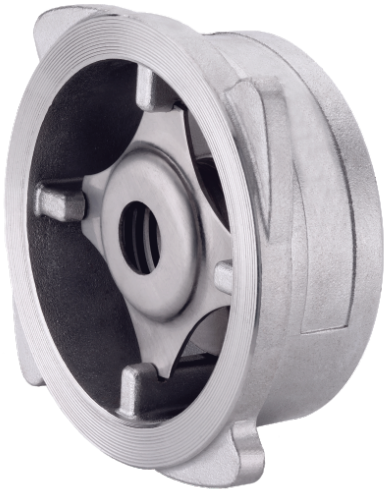


Material Specification

No.	Description	Material	Qty
1	Body	ASTM A 351 GR. CF8 / ASTM A 351 GR. CF8M / ASTM A 251 GR. WCB	1
2	Gasket	PTFE Teflon / GRAFOIL	1
3	Glass	Borosilicate, Toughened	2
4	Top & Bottom Side Plate	ASTM A 351 GR. CF8 / ASTM A 351 GR. CF8M / ASTM A 251 GR. WCB	1
5	Stud & Nut	MS / SS304 / SS316	1

Hydro Test (150#)

Test Type	Kg / Cm2	PSIG
Hydro Body	32	430
Hydro Seat	10	142



Technical Specification

Size	DN15 to DN150
End Connection	Flange End
Face to Face	Suitable To Mount Between Two Flange
Testing Standard	API 598
Design Standard	DIN EN558-2
Rating	PN40

Features

- ✓ Disc Seat : Metal to metal Seated

Dimensions

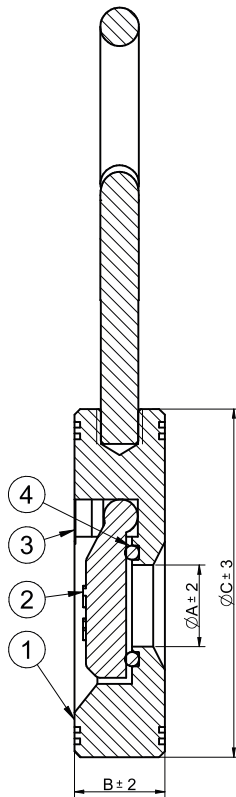
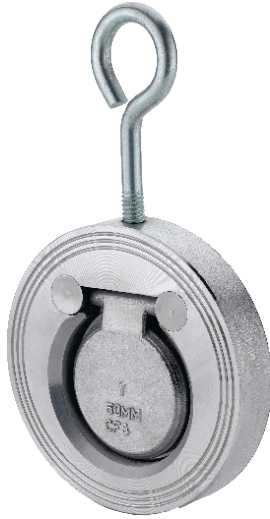
SIZE NB	A	ØB	ØC	D	ØE
15	61	14	37	16	46
20	71	20	44	20	52
25	83	24	55	23	63
40	102	39	77	32	84
50	125	48	92	39	104
65	142	65	105	46	115
80	153	80	120	50	132
100	183	100	139	61	154
125	218	122	170	90	186
150	255	148	204	105	216

Material Specification

No.	Description	Material	Qty
1	Body	ASTM A 351 GR. CF8 / ASTM A 351 GR. CF8M	1
2	Cover Plate	ASTM A 351 GR. CF8 / ASTM A 351 GR. CF8M	1
3	Spring	AISI SS 304 / AISI SS 316	1
4	Lock Plate	AISI SS 304 / AISI SS 316	1

Hydro Test (150#)

Test Type	Kg / Cm2	PSIG
Hydro Body	32	430
Hydro Seat	22	315



Technical Specification

Size	DN25 to DN250
End Connection	Suitable To Mounting Between Two Flange
Design Standard	API 6D
Testing Standard	API 598

Features

- ☑ Suitable For Horizontal & Vertical Mounting

Dimensions (150#)

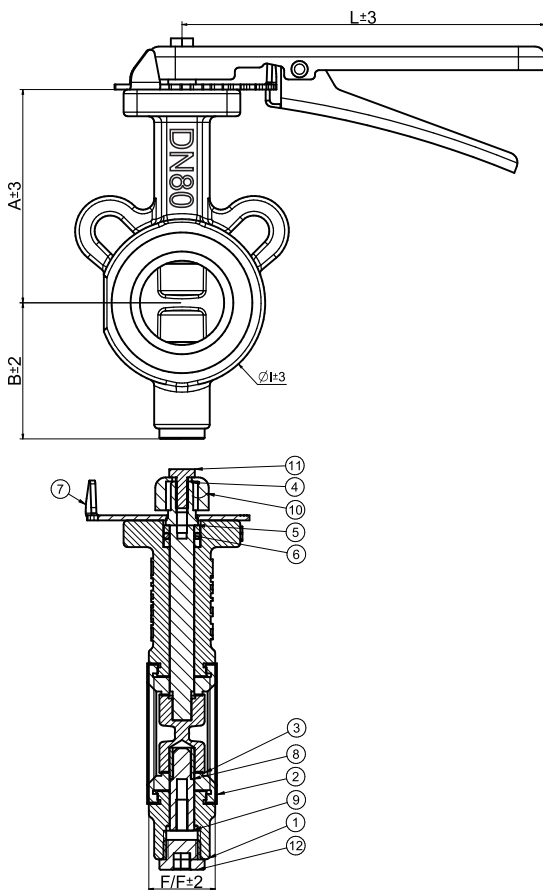
SIZE NB	ØA	B	ØC
25	14	15.5	60
40	22	17	81.5
50	31.5	17	96
65	40	17	109
80	53	17	127
100	72	17	159
125	91.5	17	190
150	115	18	213
200	156	21	271
250	192	26.5	330

Material Specification

No.	Description	Material	Qty
1	Body	ASTM A 351 GR. CF8 / ASTM A 351 GR. CF8M ASTM A 251 GR. WCB / CI	1
2	Disc	ASTM A 351 GR. CF8 / ASTM A 351 GR. CF8M ASTM A 251 GR. WCB	1
3	Hinge	GI / SS 304	2
4	O-ring	RUBBER / PTFE	1

Hydro Test (150#)

Test Type	Kg / Cm2	PSIG
Hydro Body	10	142
Hydro Seat	6	85



Technical Specification

Size	DN40 to DN400
End Connection	Wafer Type
Face to Face	BS 5155
Design Standard	BS 5155
Testing Standard	BS 6755
Operation	Lever, Gear & Pneumatically

Features

- ✓ Replaceable Seat
- ✓ Pressure Rating PN16

Dimensions (150#)

SIZE	A	B	ØI	F/F	L	MOUNTING FLANGE
DN40	104	66	81	32	180	F05
DN50	111	69	94	42	180	F05
DN65	119	80	110	45	180	F05
DN80	128	87	124	45	220	F05
DN100	145	103	154	53	265	F05
DN125	165	121	183	56	270	F07
DN150	175	145	210	56	270	F07
DN200	218	167	266	60	350	F07
DN250	277	222	325	68	185	F10
DN300	315	230	380	78	185	F10
DN350	340	262	413	78	185	F12
DN400	373	294	474	102	185	F12

Material Specification

No.	Description	Material	Qty
1	Body	CI	1
2	Seat	EPDM	1
3	Disc	SGI / CF8 / CF8M	1
4	Steam	SS 410 / CF8 / CF8M	1
5	Washer	ABS / PTFE	2
6	O-ring	EPDM	1
7	Locking Plate	SHEET METAL	1
8	Guide Bush	ABS / PTFE	1
9	Stopper Pin	SS 410	1
10	Lever	SHEET METAL	1
11	Bolt	SS 202 / MS	1
12	Lnkey Bolt	MS	1

Hydro Test (150#)

Test Type	Pressure Rating	Kg / Cm2	PSIG
Hydro Body	PN16	22	312
Hydro Seat	PN16	16	228

Note :

- Up To DN250, It Is Available Only In Gear Operated

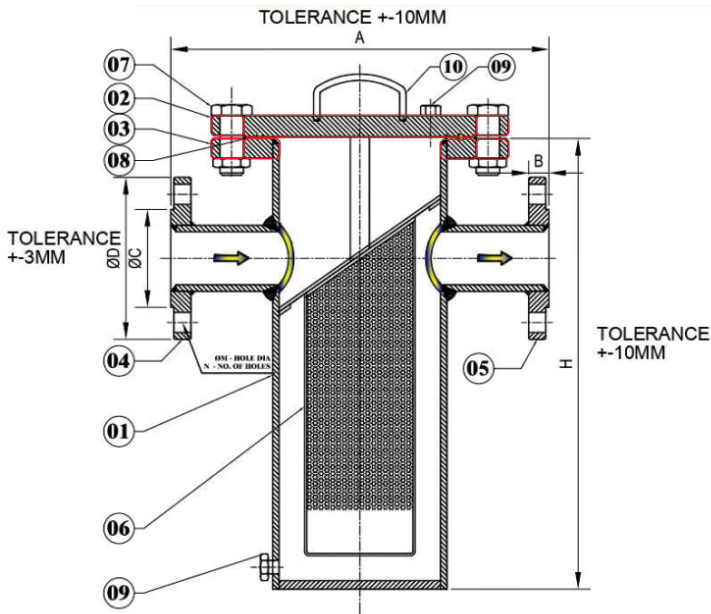


Technical Specification

Size	DN25 to DN600
End Connection	Flange As Per ANSI B 16.5 - 150#
Face to Face	ANSI B 16.10
Design Standard	Manufacturer Defined

Dimensions (150#)

SIZE	A	H	B	ØC	ØD	ØM	N	PCD
25	200	300	11	51	108	16	4	79
40	260	330	14	73	127	16	4	98.5
50	260	335	16	92	152	19	4	120.5
65	260	350	17.5	105	178	19	4	140
80	300	365	19	127	190.5	19	4	152.4
100	330	420	24	157	229	19	8	190.5
125	400	455	24	186	254	19	8	216
150	400	480	25	216	279	22	8	241
200	465	620	28.5	270	343	22	8	298.4
250	515	770	30	324	406	25	12	362
300	575	940	32	381	483	25	12	432
350	680	1040	35	412.7	533.4	28.6	12	476.2
400	750	1085	36.5	469.9	596.9	28.6	16	539.7
450	850	1200	40	533.4	635	31.7	16	577.8
500	1000	1300	43	584.2	698.5	31.7	20	635
600	1200	1400	47.6	692.1	812.8	34.9	20	749.3



Material Specification

No.	Description	Material	Qty
1	Body	IS 2062	1
2	Top Cover	IS 2062	1
3	Body Cover	IS 2062	1
4	Inlet Flange	IS 2062	1
5	Outlet Flange	IS 2062	1
6	Screen	SS 304	1
7	Cover Bolt & Nut	Carbon Steel	-
8	Gasket	Nitrile / Wound Gasket	1
9	Drain Plug & Vent Plug	ASTM A 105	1
10	Lifting Lever	Carbon Steel	1

Hydro Test (150#)

Test Type	Kg / Cm2	PSIG
Hydro Body	16	225
Hydro Seat	10	150

Note :

- SS304 & SS316 Available on Request.

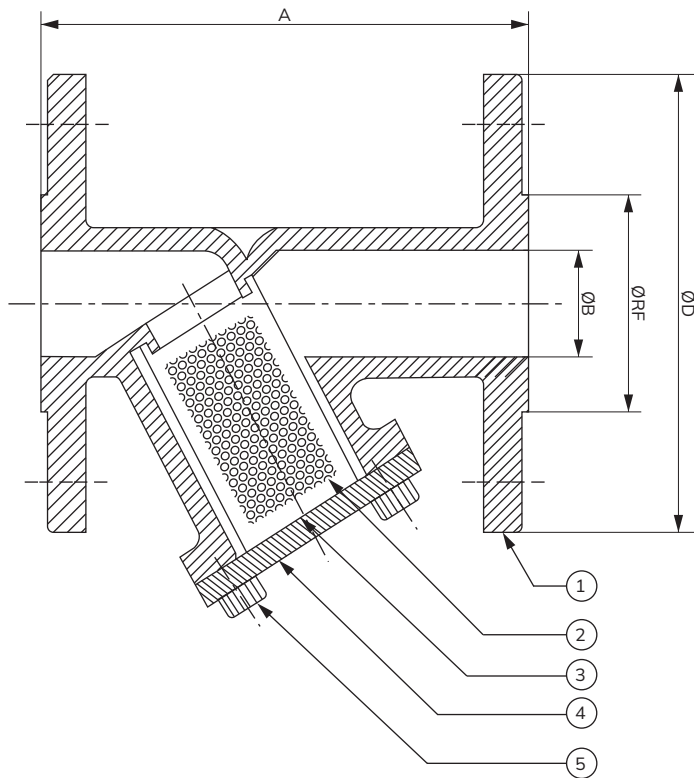


Technical Specification

Size	DN25 to DN100
End Connection	Flange As Per ANSI B 16.5 - 150#
Face to Face	ANSI B 16.10
Design Standard	Manufacturer Defined

Dimensions (150#)

SIZE	A	ØB	ØD	ØRF
25	128	25	108	51
40	165	39	127	73
50	179	49	152	95
65	190	63	178	105
80	203	75	189	126
100	229	100	229	157



Material Specification

No.	Description	Material	Qty
1	Body	ASTM A 351 GR. CF8 / CF8M / A216 GR. WCB (C.S.) / C.I.	1
2	Screen	M.S. / S.S. - 202 / 304 / 316	1
3	Seat Ring	Spiral Wound / PTFE / Rubber	1
4	Cover	ASTM A 351 GR. CF8 / CF8M / A216 GR. WCB (C.S.) / C.I.	1
5	Cover Bolt & Nut	ASTM A 193 GR. B7 / ASTM A 194 GR. 2H	4

Hydro Test (150#)

Test Type	Kg / Cm2	PSIG
Hydro Body	30	450
Hydro Seat	21	300



Ball Valve Technical Specification

Valve Size	DN25 to DN100
Body Material	Stainless Steel (SS304 / SS316), Carbon Steel, PVC
Ball Material	SS304 / SS316, Chrome-plated Brass
Seat Material	PTFE / RPTFE / TFM / Metal Seated
Size Range	½" to 12" (DN15 to DN300)
End Connections	Flanged (ANSI/ASME B16.5), Threaded (NPT/BSP), Socket Weld, Butt Weld
Pressure Rating	PN16–PN40 / Class 150–300 / up to 1000 PSI
Temperature Range	-20°C to +200°C (Depending on Seat Material)
Bore Type	Full Bore / Reduced Bore
Leakage Class	Class VI (Bubble-Tight)
Design Standard	API 6D / ASME B16.34 / ISO 5211
Testing Standard	API 598 / EN 12266

Actuator Specifications

Parameter	Pneumatic Actuator	Electric Actuator
Type	Double Acting / Spring Return	On / Off / Modulating (4–20 mA or 0–10 VDC)
Air Supply	4 - 8 bar (58 - 120 psi)	-
Power Supply	-	24V DC / 110V AC / 230V AC
Control Signal	3/2, 5/2 Solenoid Valves	4–20 mA / Modbus / Profibus
Enclosure Rating	IP67 / IP68 / Ex d (ATEX for Hazardous Zones)	IP67 / IP68 / Ex-proof (optional)
Duty Cycle	100% (Pneumatic)	75–100% (Electric, Depending on Model)
Manual Override	Available (Optional)	Available
Position Feedback	Mechanical / Limit Switch / Potentiometer	Limit Switches / Analog Feedback

Optional Features

- ✓ Limit switches for open/close indication
- ✓ Fail-safe operation (spring return)
- ✓ Positioners for modulating control
- ✓ Explosion-proof enclosures (ATEX / IECEx)
- ✓ Heating elements for low-temperature operation
- ✓ Smart actuators with diagnostics (Bluetooth / HART / Modbus)

Applications

- ✓ Water and Wastewater Treatment
- ✓ Oil & Gas Pipelines
- ✓ Chemical & Petrochemical Plants
- ✓ HVAC Systems
- ✓ Food and Beverage
- ✓ Pharmaceutical Manufacturing



Butterfly Valve Technical Specification

Valve Type	Actuator operated Butterfly Valve
Body Material	Stainless Steel (SS304 / SS316), Cast iron
Disc Material	Stainless Steel (SS304 / SS316), SGI
Shaft Material	Stainless Steel (SS304 / SS316), SS410
Seat Material	EPDM Rubber, Silicon, Viton
Size Range	1½" to 14" (DN40 to DN350)
End Connections	Wafer Type, Lug Type
Pressure Rating	PN16
Temperature Range	-20°C to +230°C (depending on seat material)
Design Standards	BS 5155
Testing Standards	BS 6755

Actuator Specifications

Parameter	Pneumatic Actuator	Electric Actuator
Type	Double Acting / Spring Return	On / Off / Modulating (4–20 mA or 0–10 VDC)
Air Supply	4 - 8 bar (58 - 120 psi)	-
Power Supply	-	24V DC / 110V AC / 230V AC
Control Signal	3/2, 5/2 Solenoid Valves	4–20 mA / Modbus / Profibus
Enclosure Rating	IP67 / IP68 / Ex d (ATEX for Hazardous Zones)	IP67 / IP68 / Ex-proof (optional)
Duty Cycle	100% (Pneumatic)	75–100% (Electric, Depending on Model)
Manual Override	Available (Optional)	Available
Position Feedback	Mechanical / Limit Switch / Potentiometer	Limit Switches / Analog Feedback

Optional Features

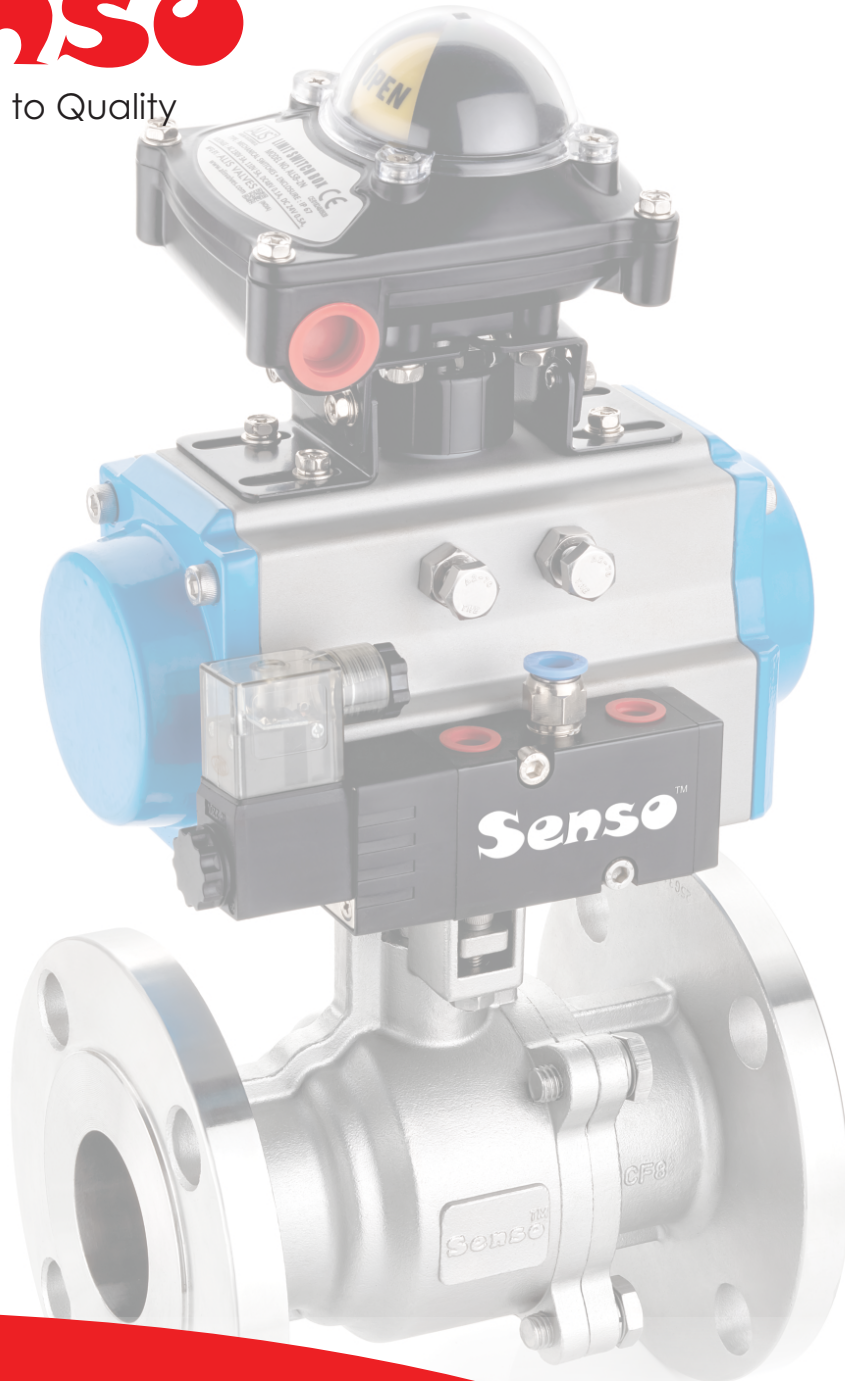
- ✓ Limit switches for open/close indication
- ✓ Fail-safe operation (spring return)
- ✓ Positioners for modulating control
- ✓ Explosion-proof enclosures (ATEX / IECEx)
- ✓ Heating elements for low-temperature operation
- ✓ Smart actuators with diagnostics (Bluetooth / HART / Modbus)

Applications

- ✓ Water and Wastewater Treatment
- ✓ Oil & Gas Pipelines
- ✓ Chemical & Petrochemical Plants
- ✓ HVAC Systems
- ✓ Food and Beverage
- ✓ Pharmaceutical Manufacturing

Senso™

Committed to Quality



Manufacture by :



DEFINE
INDUSTRIES
Quality • Trust

 info@sensovalves.com

 www.sensovalves.com

 Unit 1 : Rani Industries Estate, Division-1, Plot No-52, B/h Parin Furniture,
Gondal Road, Vavdi, Rajkot, Gujarat, 360004

Unit 2 : Plot No-3, Shed No-1, Ribda Railway Station, Global Industrial Estate,
Opp Accurate Casting, Ribda, Rajkot, Gujarat, 360311

